



Website: <http://www.bfsanitary.com>

Tel: +86-512-87888612 Fax: +86-512-82177486

Address: No.88 Maoyuan Road ,Zhoushi Town ,Kunshan, Jiangsu, China

Vacuum Adapters

- Tubulated Adapter
- Pipe Adapter
- Quick Disconnect Adapter
- Reducing Adapter

Features:

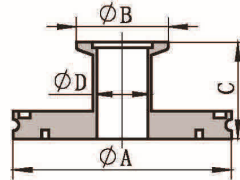
1. Standard materials are in 304 and 316L stainless steel.
2. Adapters are supplied with a machining finish. Other finishes are also available.
3. Vacuum Range: $\geq 10^{-8}$ Torr
4. Seal Temperature Range:
 - Fluorocarbon FKM (Viton): -5 °C ~ 204 °C (23 °F ~ 399 °F)
 - Silicon: -50 °C ~ 180 °C (-58 °F ~ 356 °F)
 - Buna-N (NBR): - 25 °C ~ 121 °C (-13 °F ~ 250 °F)

Applications:

1. Connection exchange
2. Use Teflon tape for sealing threaded joint.

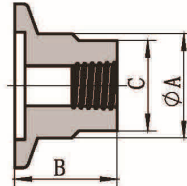
Vacuum Adapters

ISO-KF Tubulated Adaptor



Flange Size	Tube Size	Dimensions, in. (mm)			
		A	B	C	D
ISO63xKF25	1"	3.74" (95.0)	1.57" (40.0)	1.65" (42.0)	1.00" (25.4)
ISO63xKF40	1 1/2"	3.74" (95.0)	2.17" (55.0)	1.65" (42.0)	1.50" (38.1)
ISO63xKF50	2"	3.74" (95.0)	2.95" (75.0)	1.65" (42.0)	2.00" (50.8)
ISO80xKF40	1 1/2"	4.33" (110.0)	2.17" (55.0)	1.65" (42.0)	1.50" (38.1)
ISO80xKF50	2"	4.33" (110.0)	2.95" (75.0)	1.65" (42.0)	2.00" (50.8)
ISO100xKF40	1 1/2"	5.12" (130.0)	2.17" (55.0)	1.65" (42.0)	1.50" (38.1)
ISO100xKF50	2"	5.12" (130.0)	2.95" (75.0)	1.65" (42.0)	2.00" (50.8)

KF Female Pipe Adaptor

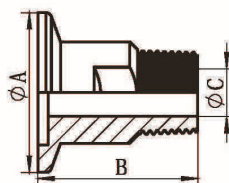


Flange Size	Tube Size	Dimensions, in. (mm)			Thread
		A	B	C	
KF16PT125	3/4"	0.75" (19.1)	0.98" (25.0)	0.67" (17.0)	1/8"BSPT
KF25PT125	1"	1.00" (25.4)	0.98" (25.0)	0.75" (19.0)	1/8"BSPT
KF40PT125	1 1/2"	1.50" (38.1)	0.98" (25.0)	1.26" (32.0)	1/8"BSPT
KF50PT125	2"	2.00" (50.8)	0.98" (25.0)	1.81" (46.0)	1/8"BSPT
KF16PT025	3/4"	0.75" (19.1)	0.98" (25.0)	0.67" (17.0)	1/4"BSPT
KF25PT025	1"	1.00" (25.4)	0.98" (25.0)	0.75" (19.0)	1/4"BSPT
KF40PT025	1 1/2"	1.50" (38.1)	0.98" (25.0)	1.26" (32.0)	1/4"BSPT
KF50PT025	2"	2.00" (50.8)	0.98" (25.0)	1.81" (46.0)	1/4"BSPT

Flange Size	Tube Size	Dimensions, in. (mm)			Thread
		A	B	C	
KF16PT125	3/4"	0.75" (19.1)	0.98" (25.0)	0.67" (17.0)	1/8"NPT
KF25PT125	1"	1.00" (25.4)	0.98" (25.0)	0.75" (19.0)	1/8"NPT
KF40PT125	1 1/2"	1.50" (38.1)	0.98" (25.0)	1.26" (32.0)	1/8"NPT
KF50PT125	2"	2.00" (50.8)	0.98" (25.0)	1.81" (46.0)	1/8"NPT
KF16PT025	3/4"	0.75" (19.1)	0.98" (25.0)	0.67" (17.0)	1/4"NPT
KF25PT025	1"	1.00" (25.4)	0.98" (25.0)	0.75" (19.0)	1/4"NPT
KF40PT025	1 1/2"	1.50" (38.1)	0.98" (25.0)	1.26" (32.0)	1/4"NPT
KF50PT025	2"	2.00" (50.8)	0.98" (25.0)	1.81" (46.0)	1/4"NPT

Vacuum Adapters

KF Male Pipe Adaptor

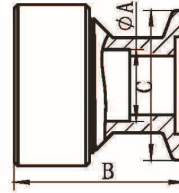


Flange Size	Tube Size	Dimensions, in. (mm)			Thread
		A	B	C	
KF16PT125	3/4"	1.18" (30.0)	1.38" (35.0)	0.19" (4.7)	1/8"BSPT
KF16PT025	3/4"	1.18" (30.0)	1.38" (35.0)	0.28" (7.1)	1/4"BSPT
KF25PT125	1"	1.57" (40.0)	1.38" (35.0)	0.19" (4.7)	1/8"BSPT
KF25PT025	1"	1.57" (40.0)	1.38" (35.0)	0.28" (7.1)	1/4"BSPT
KF25PT050	1"	1.57" (40.0)	1.57" (40.0)	0.47" (11.9)	1/2"BSPT
KF25PT075	1"	1.57" (40.0)	1.57" (40.0)	0.63" (15.9)	3/4"BSPT
KF40PT025	1 1/2"	2.17" (55.0)	1.38" (35.0)	0.28" (7.1)	1/4"BSPT
KF40PT050	1 1/2"	2.17" (55.0)	1.57" (40.0)	0.47" (11.9)	1/2"BSPT
KF40PT075	1 1/2"	2.17" (55.0)	1.57" (40.0)	0.63" (15.9)	3/4"BSPT
KF40PT100	1 1/2"	2.17" (55.0)	1.38" (35.0)	0.87" (22.2)	1"BSPT
KF50PT025	2"	2.95" (75.0)	1.57" (40.0)	0.28" (7.1)	1/4"BSPT
KF50PT050	2"	2.95" (75.0)	1.57" (40.0)	0.47" (11.9)	1/2"BSPT
KF50PT075	2"	2.95" (75.0)	1.57" (40.0)	0.63" (15.9)	3/4"BSPT
KF50PT100	2"	2.95" (75.0)	1.77" (45.0)	0.87" (22.2)	1"BSPT

Flange Size	Tube Size	Dimensions, in. (mm)			Thread
		A	B	C	
KF16NPT125	3/4"	1.18" (30.0)	1.38" (35.0)	0.19" (4.7)	1/8"NPT
KF16NPT025	3/4"	1.18" (30.0)	1.38" (35.0)	0.28" (7.1)	1/4"NPT
KF25NPT125	1"	1.57" (40.0)	1.38" (35.0)	0.19" (4.7)	1/8"NPT
KF25NPT025	1"	1.57" (40.0)	1.38" (35.0)	0.28" (7.1)	1/4"NPT
KF25NPT050	1"	1.57" (40.0)	1.57" (40.0)	0.47" (11.9)	1/2"NPT
KF25NPT075	1"	1.57" (40.0)	1.57" (40.0)	0.63" (15.9)	3/4"NPT
KF40NPT025	1 1/2"	2.17" (55.0)	1.38" (35.0)	0.28" (7.1)	1/4"NPT
KF40NPT050	1 1/2"	2.17" (55.0)	1.57" (40.0)	0.47" (11.9)	1/2"NPT
KF40NPT075	1 1/2"	2.17" (55.0)	1.57" (40.0)	0.63" (15.9)	3/4"NPT
KF40NPT100	1 1/2"	2.17" (55.0)	1.38" (35.0)	0.87" (22.2)	1"NPT
KF50NPT025	2"	2.95" (75.0)	1.57" (40.0)	0.28" (7.1)	1/4"NPT
KF50NPT050	2"	2.95" (75.0)	1.57" (40.0)	0.47" (11.9)	1/2"NPT
KF50NPT075	2"	2.95" (75.0)	1.57" (40.0)	0.63" (15.9)	3/4"NPT
KF50NPT100	2"	2.95" (75.0)	1.77" (45.0)	0.87" (22.2)	1"NPT

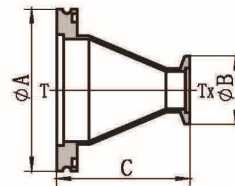
Vacuum Adapters

KF Quick-Disconnect Adaptor



Flange Size	Tube Size	Dimensions, in. (mm)		
		A	B	C
KF16QA025	1/4"	0.26" (6.5)	1.31" (33.4)	1.18" (30.0)
KF16QA050	1/2"	0.51" (13.0)	1.44" (36.5)	1.18" (30.0)
KF16QA075	3/4"	0.76" (19.3)	1.75" (44.5)	1.18" (30.0)
KF25QA050	1/2"	0.51" (13.0)	1.44" (36.5)	1.57" (40.0)
KF25QA075	3/4"	0.76" (19.3)	1.75" (44.5)	1.57" (40.0)
KF25QA100	1"	1.01" (25.7)	2.00" (50.8)	1.57" (40.0)
KF40QA050	1/2"	0.51" (13.0)	1.44" (36.5)	2.17" (55.0)
KF40QA075	3/4"	0.76" (19.3)	1.75" (44.5)	2.17" (55.0)
KF40QA100	1"	1.01" (25.7)	2.00" (50.8)	2.17" (55.0)
KF40QA150	1 1/2"	1.51" (38.4)	2.37" (60.3)	2.17" (55.0)
KF50QA150	1 1/2"	1.51" (38.4)	2.37" (60.3)	2.95" (75.0)
KF50QA200	2"	2.01" (51.0)	2.37" (60.3)	2.95" (75.0)

ISO-KF Conical Reducing Adaptor



Flange Size	Tube Size		Dimensions, in. (mm)		
	T	Tx	A	B	C
ISO80xKF40	3"	1 1/2"	4.33" (110.0)	2.17" (55.0)	2.48" (63.0)
ISO100xKF40	4"	1"	5.12" (130.0)	2.17" (55.0)	2.48" (63.0)
ISO80xKF50	3"	1 1/2"	4.33" (110.0)	2.95" (75.0)	2.48" (63.0)
ISO100xKF50	4"	1"	5.12" (130.0)	2.95" (75.0)	2.48" (63.0)

Vacuum Adapters

KF-KF Concentric Reducing Adaptor



Flange Size	Tube Size		C, in. (mm)
	T	TX	
NW25xNW16	1"	3/4"	1.57" (40.0)
NW40xNW16	1 1/2"	3/4"	1.57" (40.0)
NW40xNW25	1 1/2"	1"	1.57" (40.0)
NW50xNW16	2"	3/4"	1.57" (40.0)
NW50xNW25	2"	1"	1.57" (40.0)
NW50xNW40	2"	1 1/2"	1.57" (40.0)

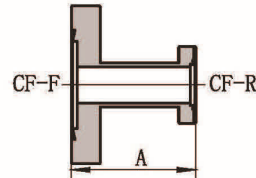
ISO-ISO Concentric Reducing Adaptor



Flange Size	Tube Size		C, in. (mm)
	T	TX	
ISO80xISO63	3"	2 1/2"	4.13" (105.0)
ISO100xISO63	4"	2 1/2"	4.13" (105.0)
ISO100xISO80	4"	3"	4.13" (105.0)

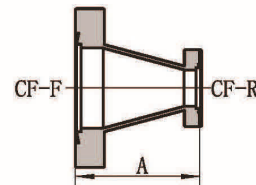
Vacuum Adapters

CF Reducing Adaptor-Small Flange Rotatable



Flange Size	Tube Size	A, in. (mm)
CF40xCF16	3/4"	3.00" (76.2)
CF63xCF16		3.00" (76.2)
CF63xCF40	1 1/2"	3.00" (76.2)
CF100xCF40		3.00" (76.2)
CF100xCF63	2 1/2"	3.00" (76.2)
CF160xCF63		3.00" (76.2)
CF160xCF100	4"	3.00" (76.2)
CF200xCF160	6"	4.75" (120.6)

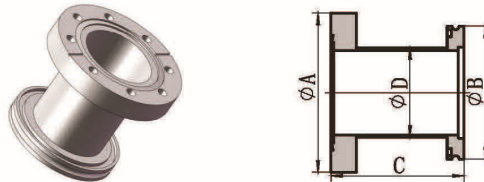
CF Reducing Rotatable



Flange Size	Tube Size	A, in. (mm)
CF160x100	4"	4.80" (122.0)
CF250x200	8"	5.00" (127.0)

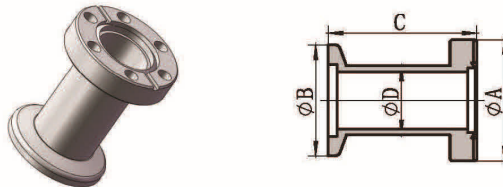
Vacuum Adapters

CF-ISO Tubulated Adaptor



Flange Size	Tube Size	Dimensions, in. (mm)			
		A	B	C	D
CF63xISO63	2 1/2"	4.47" (113.6)	3.74" (95.0)	3.54" (90.0)	2.50" (63.5)
CF100xISO63		5.97" (151.6)	3.74" (95.0)	3.54" (90.0)	2.50" (63.5)
CF100xISO100	4"	5.97" (151.6)	5.12" (130.0)	3.54" (90.0)	4.00" (101.6)
CF100xISO160		5.97" (151.6)	7.09" (180.0)	3.54" (90.0)	4.00" (101.6)
CF160xISO63	2 1/2"	7.97" (202.5)	3.74" (95.0)	3.54" (90.0)	2.50" (63.5)
CF160xISO100	6"	7.97" (202.5)	5.12" (130.0)	3.54" (90.0)	4.00" (101.6)
CF160xISO160		7.97" (202.5)	7.09" (180.0)	3.54" (90.0)	6.00" (152.4)

CF-KF Tubulated Adaptor



Flange Size	Tube Size	Dimensions, in. (mm)			
		A	B	C	D
CF10xKF10	1/2"	1.33" (33.8)	1.18" (30.0)	1.69" (43.0)	0.50" (12.7)
CF16xKF16	3/4"	1.33" (33.8)	1.18" (30.0)	1.69" (43.0)	0.75" (19.1)
CF40xKF10	1/2"	2.74" (69.5)	1.18" (30.0)	1.78" (45.3)	0.50" (12.7)
CF40xKF16	3/4"	2.74" (69.5)	1.18" (30.0)	1.78" (45.3)	0.75" (19.1)
CF40xKF25	1"	2.74" (69.5)	1.57" (40.0)	1.78" (45.3)	1.00" (25.4)
CF40xKF40	1 1/2"	2.74" (69.5)	2.17" (55.0)	1.78" (45.3)	1.50" (38.1)
CF63xISO50	2"	4.47" (113.6)	2.95" (75.0)	1.95" (49.5)	2.00" (50.8)

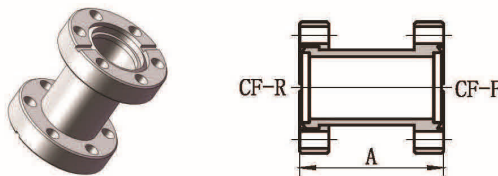
Vacuum Adapters

CF Reducing Adaptor-Fixed



Flange Size	Tube Size	A, in. (mm)
CF40x16	3/4"	3.00" (76.2)
CF63x16		3.00" (76.2)
CF63x40	1 1/2"	3.00" (76.2)
CF100x40		3.00" (76.2)
CF100x63	2 1/2"	3.00" (76.2)
CF160x63		3.00" (76.2)
CF160x100	4"	3.00" (76.2)
CF200x160	6"	4.75" (120.6)

CF Full Nipples



Flange Size	Tube Size	A, in. (mm)
CF16	3/4"	3.00" (76.2)
CF25	1"	4.09" (104.0)
CF40	1 1/2"	4.92" (125.0)
CF50	2"	6.46" (164.0)
CF63	2 1/2"	6.77" (172.0)
CF80	3"	7.05" (179.0)
CF100	4"	8.62" (219.0)